

BEVERLY CAÑON GARDENS - JUNE 24 2026

Summer Garden Party



CHAMBER
of
COMMERCE



CHAMBER
of
COMMERCE

THANK YOU TO OUR SPONSORS!



PRESENTING

PLANT



GOLD SPONSORS



SILVER SPONSORS



EVENT SPONSORS



#BEVERLYHILLSGARDENPARTY | #BHCC | #BEVERLYHILLS

Installation



STEPHANIE COHEN

Cedars Sinai Medical Center | Chair of the Board
2026 - 2027

Stephanie Cohen was appointed Vice President of Government & Industry Relations at Cedars-Sinai in 2024.

OFFER NISSENBAUM

The Peninsula Beverly Hills | Chair of the Board
2025 - 2026

Offer is a distinguished leader in luxury hospitality, currently serving as Managing Director of The Peninsula Beverly Hills.



WELCOME!

Welcome to the Beverly Hills Chamber of Commerce's Summer Garden Party: Member Appreciation & Board Installation. This special evening is the Chamber's tradition of honoring the outstanding contributions of our members and introducing the new Board of Directors and our Chair for the upcoming year.

Our Mission Statement

The mission of the Beverly Hills Chamber of Commerce is to empower businesses to thrive by being an invaluable resource for optimizing connections.

Please join us in congratulating our 2025-2026 Board Chair - Offer Nissenbaum on a successful year of leadership. We are appreciative of his contributions to the Chamber and our City as a whole.

Tonight, we will welcome our Stephanie Cohen as the new Chair of the Board for the Beverly Hills Chamber 2026-2027 year. We are looking forward to Offer's insight and direction for the Chamber for the upcoming year.

Thank you to our generous event sponsors and the amazing cuisine and beverages provided by Beverly Hills' finest local businesses. Enjoy!

ORDER OF EVENTS

5:00 PM - Evening Begins

5:05 PM - Official Welcome and National Anthem

5:10 PM - Platinum Sponsor Welcome and Chamber Recognitions

5:25 PM - Year in Review Remarks by 2025-2026 Board Chair Offer Nissenbaum

5:30 PM - Mayoral Recognition and Remarks by Mayor Corman

5:35 PM - Installation of the 105th Chamber Board Chair Stephanie Cohen

5:35 PM - Installation of the Board of Directors

5:40 PM - Year Ahead Remarks by 2026-2027 Board Chair Stephanie Cohen

5:45 PM - Garden Party and Reception Begin

CHAMBER BOARD OF DIRECTORS

Stephanie Cohen, Cedars Sinai (2026 - 2027 Chair)
Offer Nissenbaum, The Peninsula Beverly Hills (2025 - 2026 Chair)

Pouya Abdi, Parallel Acquisitions
Alexandria Anderson, Axos Bank
Gregory Barton, City of Beverly Hills Fire Department
John Bendheim, Bendheim Enterprises, Inc.
Charles L. Black III, Compass
Chris Bonbright, Avison Young
Isaac Boudaie, Network Experts Inc.
Alex Cherniss, Beverly Hills Unified School District Board of Education
Stephanie Cohen, Cedars-Sinai Health System
Maria D'Auria, Il Fornaio
Jonathan Pier Durante, Flagstar Bank
Mark Egerman, Egerman Law Group, LLP
Murray Fischer, Murray D. Fischer, Esq.
Julian A. Gold, MD
David Haimovitz, East West Bank
Sam Jagger, The Maybourne Beverly Hills
Cheryl J. Kagan, Cheryl J. Kagan Consulting

Jennifer Kullmann, The Gersh Agency
Doreen Lahav, Lucere
Narbeh Leon, EverBank
Houman Mahboubi, JLL - Houman Mahboubi
Vicky Mense, Xi'an Restaurant
Jade Mills, Jade Mills Worldwide
David Miraharooni, Brickstar Capital
Poojah Nair, Ervin Cohen & Jessup LLC
Cesar Osorio, Wilshire Financial Group
Shahrzad Panahi, U.S. Bank
Emanuele Ponzio, Crateful Catering
Chris Rivielle, Plant Construction Co.
Howard Rosoff, Rotary Club Member & Retired Attorney
Shawn Saeedian, Beverly Hills Market & Deli
Giorgio Cyphaeus Sease, The Grill On The Alley
Mark Tronstein, Rodeo Drive Associates, LLC
Ali Vahdani, Optimum Seismic, Inc.

PLANT



PLANT CONSTRUCTION

LOS ANGELES

Adaptive Reuse
Cultural
K-12
Higher Education
Historic Restoration
Hospitality
Infrastructure
Life Science

9401 Wilshire Blvd, Suite 820
Beverly Hills, CA 90212
424.288.4889

www.plantconstruction.com

Luxury Residential
Mixed-Use
Office
Seismic Retrofit
Renovation
Residential Conversion
Retail
Tenant Improvement



Strategic tax planning,
accounting, and business management.



TAX STRATEGY
& PLANNING



ACCOUNTING &
OUTSOURCED CFO



BUSINESS
ADVISORY



TWO LOCATIONS. LOCAL EXPERTISE. PERSONALIZED SERVICE.

BEVERLY HILLS

GLENDALE



310.388.9800



mashaccounting.com

SCHEDULE A CONSULTATION



PROUD MEMBER OF THE BEVERLY HILLS CHAMBER OF COMMERCE

PHX

ARCHITECTURE

BEVERLY HILLS, CA

GOLF CLUBHOUSE | ICONIC HOSPITALITY | CUSTOM RESIDENTIAL

www.phxarch.com | 310.626.4111 | @phxarch



BALDI



GEMMA

THE GATEWAY TO LUXURY SHOPPING



TWO RODEO

ABEL RICHARD • AUDEMARS PIGUET • BREGUET • BREITLING • BRUNELLO CUCINELLI • BUCCELLATI • CH CAROLINA HERRERA
DOLCE & GABBANA • ERMANNO SCERVINO • ETRO • GOLDEN GOOSE • HALCYON • HENRY JACQUES • JIMMY CHOO • KITH • KITH TREATS
LA MAISON VALMONT • MB&F LAB • MICHAEL KORS COLLECTION • MIURA BEVERLY HILLS • PERSOL EYEWEAR • PETER MARCO • PORSCHE DESIGN
RICHARD MILLE • STEFANO RICCI • TIFFANY & CO. • VICKY ON RODEO • VILEBREQUIN • VERSACE • WESTIME
WESTIME CERTIFIED PRE-OWNED WATCHES • WINN SLAVIN FINE ART

2RODEO.COM    #TWORODEODRIVE



Proudly
Celebrating

25

years of
service



**MANAGED I.T.
SERVICES**



**DISASTER
RECOVERY**



**SECURITY
CAMERAS**



**CLOUD
SERVICES**



**HOME & OFFICE
AUTOMATION**

**Accessible.
Local. Experts.**



networkexperts.la 310-275-1911

metro.net/dline

Wilshire

RUNSIDEEP



Metro

Metro proudly celebrates a new era of connection, mobility and opportunity in Beverly Hills and extends its appreciation to the Beverly Hills Chamber of Commerce for its continued support of the D Line Subway Extension Project.

BORN IN CALIFORNIA. BUILT FOR THE GOOD LIFE.

Since 2012, buzzbox premium cocktails has called Southern California home. Inspired by the Golden State's beauty and abundance, we handcraft every cocktail with all-natural, premium ingredients — delivering true bar-quality taste, anywhere life takes you.

We are proud to raise a glass as a sponsor of the Beverly Hills Chamber Summer Garden Party — because some moments deserve nothing less than the perfect cocktail.

California roots. Handcrafted excellence.
Great business, even better cocktails.



Scan here to
order online!



buzzbox
Premium Cocktails



SOUTHERN CALIFORNIA
EDISON[®]

An *EDISON INTERNATIONAL*[®] Company

*Proudly congratulating the newly installed
Board Members and President.*



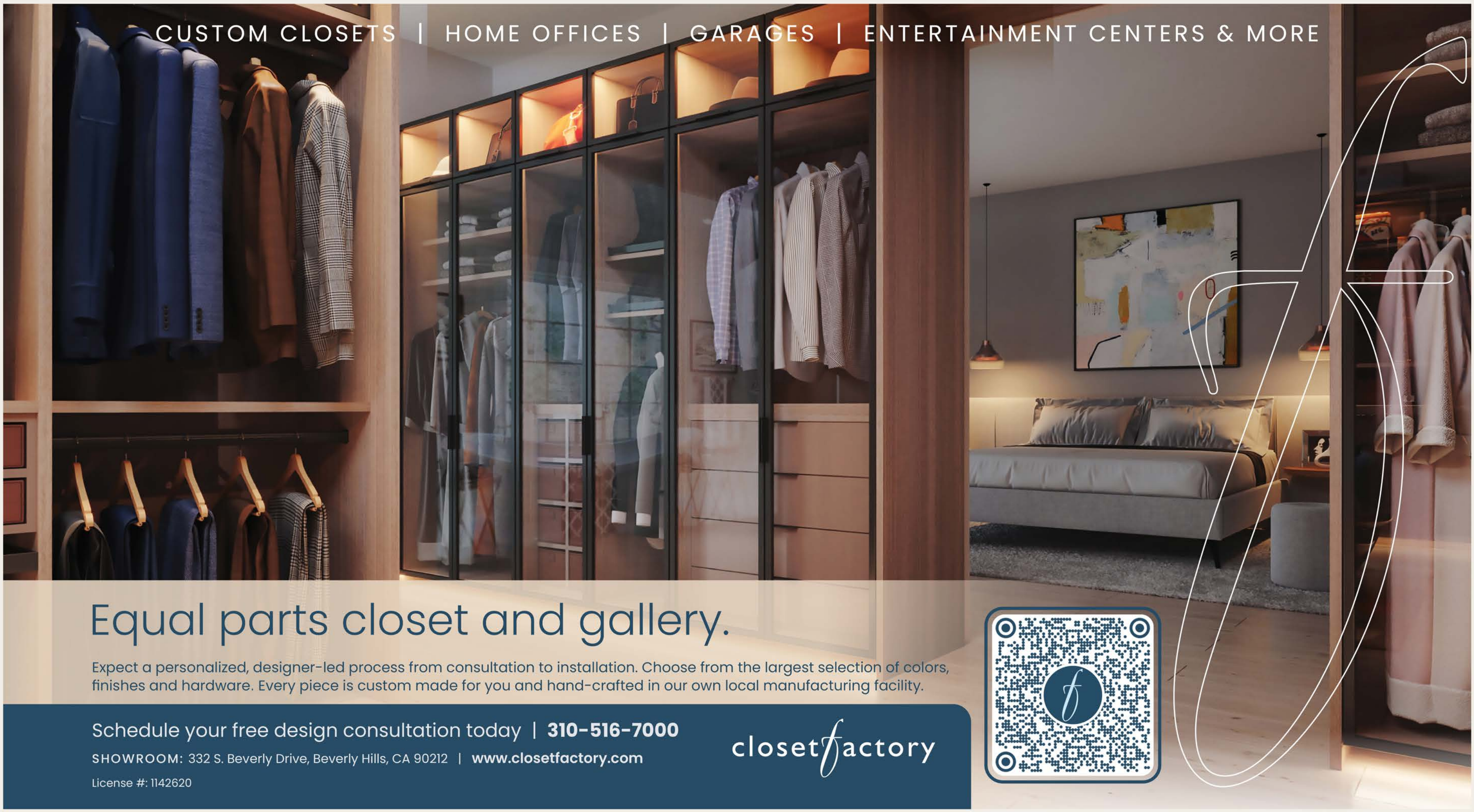
Proud sponsor of the Beverly Hills Chamber of Commerce Summer Garden Party

As a sponsor of one of the most anticipated summer events, we share a commitment to connection and excellence – simplifying complexity, so our clients can focus on what matters most.



For more information, visit citizensbank.com/privatebank
101 S. Rodeo Drive, Suite 440, Beverly Hills

CUSTOM CLOSETS | HOME OFFICES | GARAGES | ENTERTAINMENT CENTERS & MORE



Equal parts closet and gallery.

Expect a personalized, designer-led process from consultation to installation. Choose from the largest selection of colors, finishes and hardware. Every piece is custom made for you and hand-crafted in our own local manufacturing facility.

Schedule your free design consultation today | **310-516-7000**

SHOWROOM: 332 S. Beverly Drive, Beverly Hills, CA 90212 | www.closetfactory.com


License #: 1142620

closet*f*actory



SANTÉ


LIVE YOUR BEST LIFE



Every small business is a growing opportunity.

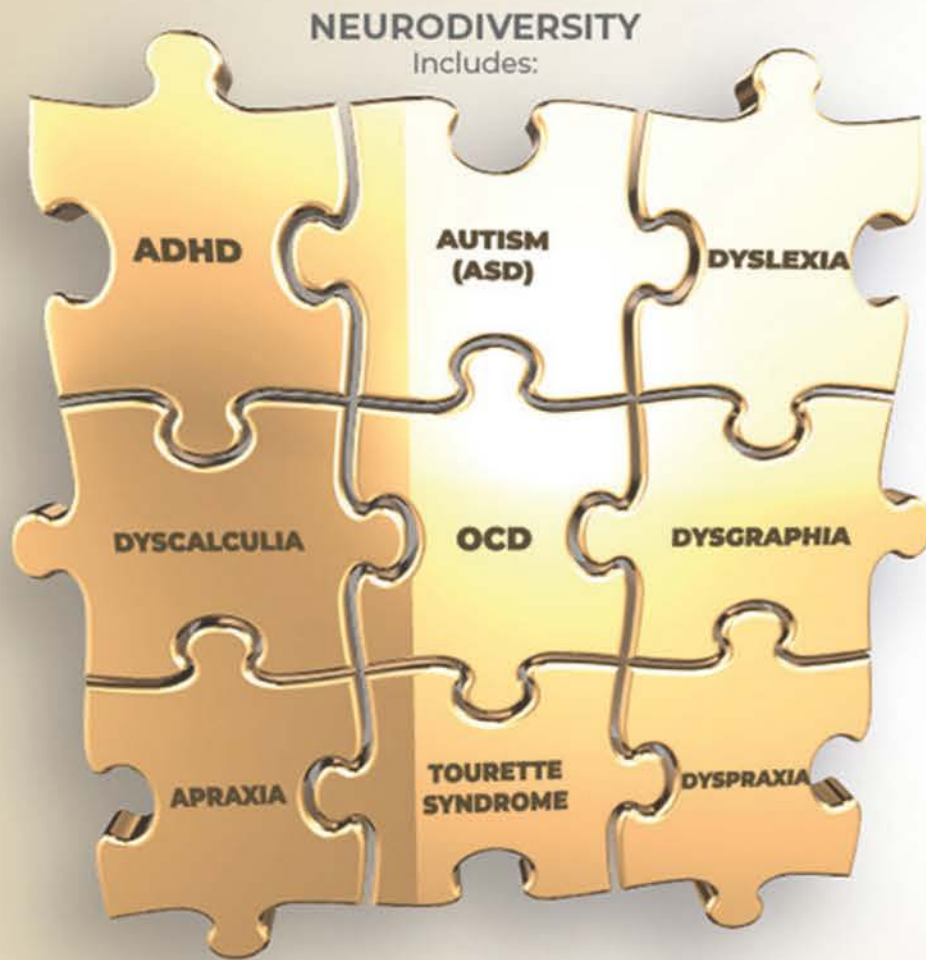
Strong foundations lead to brighter futures. That's why East West Bank is proud to support local businesses in their efforts to create jobs and build a stronger foundation in their communities. Working together, we can take the future further.

David Haimovitz, FVP-Branch Manager | 310.861.2153

 Equal Housing Lender Member FDIC

eastwestbank.com





Let's Build
HOPE Together



Grant's Crusade is a non-profit organization working to increase awareness and acceptance of the neurodiverse community by empowering others to become more accepting and sensitive to people's differences, strengths, and individuality

We proudly support a diverse range of organizations whose missions align with our values, working to enhance the lives of neurodiverse individuals. Through these partnerships, we aim to drive meaningful, lasting change with outstanding organizations working to make a difference.

THE EASTERN

BEVERLY HILLS

Energizing Beverly Hills' Eastern Gateway

8300wilshire.com

MP LOS ANGELES

HANDEL ARCHITECTS LLP

EMPRESS

1908

—GIN—



HOST YOUR NEXT UNFORGETTABLE EVENT AT THE WALLIS

From red carpet premieres to private soirées, the Wallis Annenberg Center for the Performing Arts offers a stunning blend of classic elegance and modern sophistication—right in the heart of Beverly Hills. With versatile indoor and outdoor spaces, state-of-the-art amenities, and an expert events team, The Wallis is the perfect venue for galas, film shoots, corporate gatherings, and more.

Whether you're planning an intimate reception or a grand production, elevate your event with the timeless charm and cultural prestige of The Wallis.

Explore our spaces. Envision your moment.

THEWALLIS.ORG/RENTALS



KEEP ON OVERCOMING EVERY CHALLENGE

UCLA Health

Keep on rising



All in for community celebrations

We love joining a good celebration. Whether it's a holiday, festival or special event, U.S. Bank believes in marking the moments that matter. Let's salute how far we've come and build excitement for the brighter future we can create together. [usbank.com/communitypossible](https://www.usbank.com/communitypossible)

U.S. Bank is proud to support the Beverly Hills Chamber Summer Garden Party.

Beverly Hills Main Branch
9595 Wilshire Blvd. | Beverly Hills, CA 90212



EQUAL HOUSING
LENDER

Member FDIC. ©2026 U.S. Bank 2600720



Saks Fifth Avenue

Saks Fifth Avenue
& 9600 Wilshire

PROUDLY SUPPORT

The Beverly Hills
Chamber of Commerce's
Annual Summer Garden Party

|| 9600
|| WILSHIRE





Iconic. Timeless. Unforgettable.

OUR BEVERLY HILLS LOCATION OPENED ITS DOORS IN 1984 AND HAS BEEN AN INSTITUTION IN LOS ANGELES EVER SINCE.

OUR TEAM TAKES IMMENSE PRIDE IN OFFERING ALL OF OUR GUESTS AN INCLUSIVE, WORLD CLASS DINING EXPERIENCE.

M-F 11:30A TO 9:00P | SAT 4:00P TO 9:00P | SUN 5:00P TO 9:00P | RESERVATIONS: 310-276-0615

FULL CATERING SERVICES & RESTAURANT BUYOUTS AVAILABLE

EXECUTIVE GENERAL MANAGER: GIORGIO CYPHAUS SEASE

LVMH is a Proud Sponsor of the Beverly Hills Chamber of Commerce 2026 Summer Garden Party.

1365 DOMAINE DES LAMBRAYS 1593 CHÂTEAU D'YQUEM 1668 DOM PÉRIGNON 1729 RUINART 1743 MOËT & CHANDON 1765 HENNESSY 1772 VEUVE CLICQUOT 1780 CHAUMET 1792 CHÂTEAU GALOUPET 1803 OFFICINE UNIVERSELLE BULY 1815 ARDBEG 1817 COVA 1828 GUERLAIN 1832 CHÂTEAU CHEVAL BLANC 1837 TIFFANY & CO. 1839 L'EPEE 1843 KRUG 1843 GLENMORANGIE 1846 LOEWE 1849 ROYAL VAN LENT 1849 MOYNAT 1852 LE BON MARCHÉ 1854 LOUIS VUITTON 1858 MERCIER 1860 TAG HEUER 1860 JARDIN D'ACCLIMATATION 1865 ZENITH 1870 SAMARITAINE 1884 BVLGARI 1895 BERLUTI 1898 RIMOWA 1908 LES ECHOS 1911 L'AGEFI 1914 PATOU 1916 ACQUA DI PARMA 1923 LA GRANDE ÉPICERIE DE PARIS 1924 LORO PIANA 1924 L'AMI LOUIS 1925 FENDI 1936 CITADELLES & MAZENOD 1936 FRED 1936 MINUTY 1944 LE PARISIEN 1945 CELINE 1947 DIOR 1947 PUCCI 1947 PARFUMS CHRISTIAN DIOR 1947 SCIENCES & AVENIR 1949 PARIS MATCH 1952 GIVENCHY 1952 CONNAISSANCE DES ARTS 1957 GIVENCHY PARFUMS 1957 REPOSSI 1957 VUARNET 1959 CHANDON 1960 DFS 1969 GERALD GENTA 1969 SEPHORA 1970 KENZO 1970 LA RECHERCHE 1972 PERFUMES LOEWE 1973 JOSEPH PHELPS 1974 INVESTIR 1976 BELMOND 1976 BENEFIT COSMETICS 1980 HUBLOT 1982 CHALLENGES 1983 RADIO CLASSIQUE 1983 OLE HENRIKSEN 1984 MARC JACOBS 1984 MAKE UP FOR EVER 1985 CLOUDY BAY 1988 KENZO PARFUMS 1988 DANIEL ROTH 1991 FRESH 1992 COLGIN CELLARS 1993 BELVEDERE 1996 TERRAZAS DE LOS ANDES 1998 BODEGA NUMANTHIA 1999 CHEVAL DES ANDES 2006 ARMAND DE BRIGNAC 2006 CHATEAU D'ESCLANS 2006 HÔTELS CHEVAL BLANC 2007 BARTON PERREIRA 2009 MAISON FRANCIS KURKDJIAN 2010 WOODINVILLE 2013 AO YUN 2013 L'OPINION 2017 FENTY BEAUTY BY RIHANNA 2017 VOLCAN DE MI TIERRA 2017 24S 2020 EMINENTE 2024 SIRDAVIS

LVMH

Handwritten calligraphic symbol, possibly a stylized letter or monogram, rendered in black ink on a white background.



AV AUTO VAULT TM

Rodeo Drive

EST. 1979

**AUTOMOTIVE
MANAGEMENT
AND STORAGE**





ESCAPE TO THE
French Riviera
OASIS

www.BeachNow.me

 @beachnowsocal

 Info@beachnow.me



1975

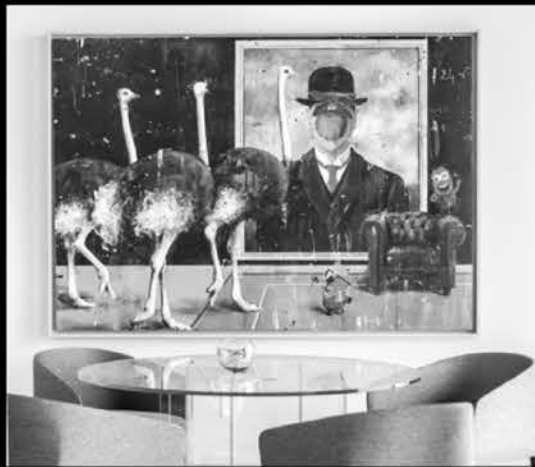
L'ERMITAGE

BEVERLY HILLS



MODERN LUXURY

ANGELENO



CULTURE | FASHION | JEWELRY | WATCHES | BEAUTY | DINING | REAL ESTATE | DESIGN | TRAVEL

UNLOCK LUXURY, VISIT [MODERNLUXURY.COM](https://www.modernluxury.com)

BEVERLY HILLS *COURIER*



PLASTIC SURGERY
MEDSPA
WOMEN'S HEALTH
WELLNESS

*Two practices.
One standard of excellence.*

436 N BEDFORD DRIVE | BEVERLY HILLS, CA 90210

BEDFORD
Breast Center

BREAST CANCER SCREENING
ADVANCED DIAGNOSTICS
BREAST CANCER SURGERY
BREAST HEALTH & WELLNESS

1st Floor

(310) 278-8200

ThePracticeHealthcare.com

[@thepracticehealthcare](https://www.instagram.com/thepracticehealthcare)

Suite 308

(310) 278-8590

BedfordBreastCenter.com

[@bedfordbreastcenter](https://www.instagram.com/bedfordbreastcenter)

AN ALL-NEW ROOFTOP EXPERIENCE

AT WALDORF ASTORIA BEVERLY HILLS

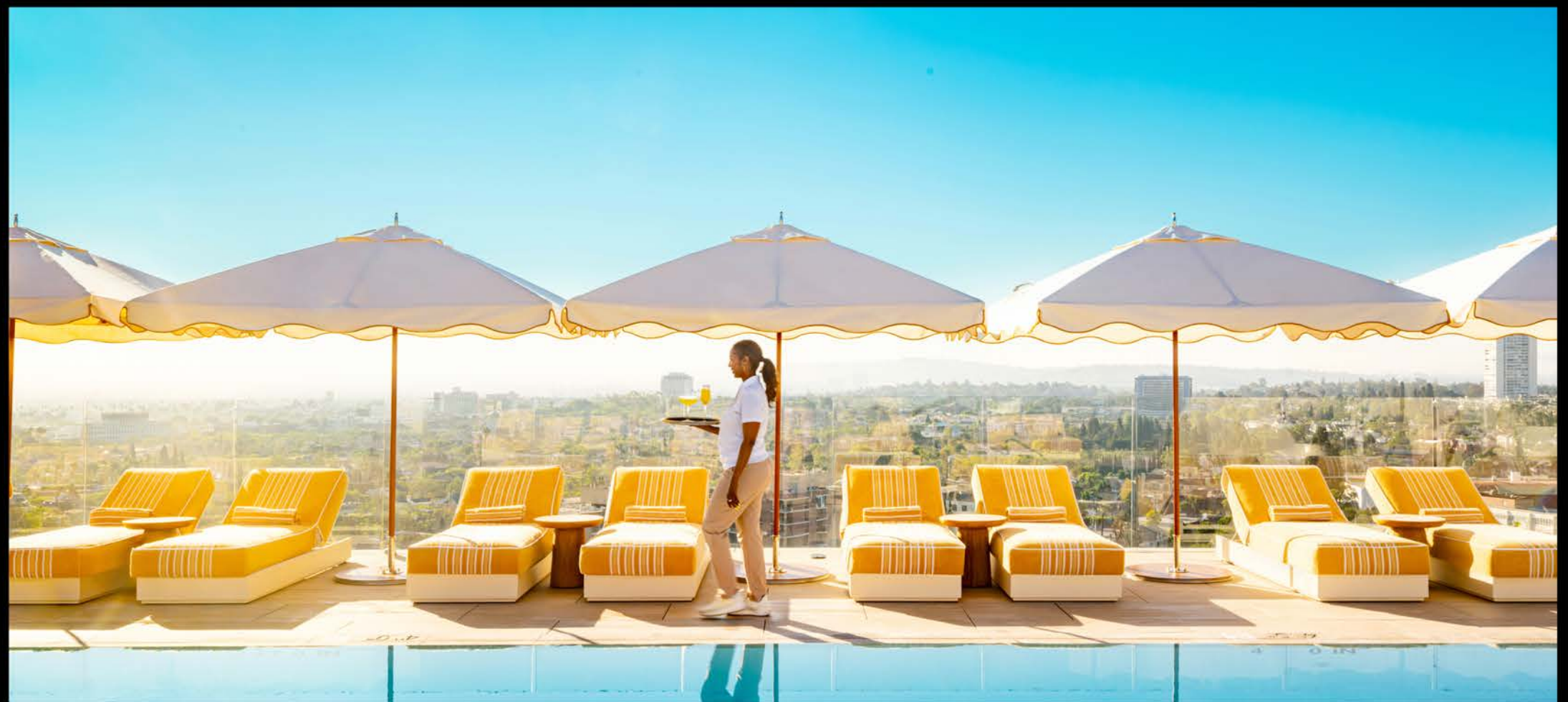
Dine at Gemma, featuring California-Inspired Pan-Asian cuisine, paired with iconic rooftop views of Los Angeles.

Reserve one of our all-new luxury poolside cabanas, and take in the bustling city view from 12 floors above the city.

GEMMA



For dining or cabana reservations, please contact
310-860-6798 or visit waldorfastoriabeverlyhills.com



MOY
FINCHER
CHIPPS

FACIAL PLASTICS & DERMATOLOGY

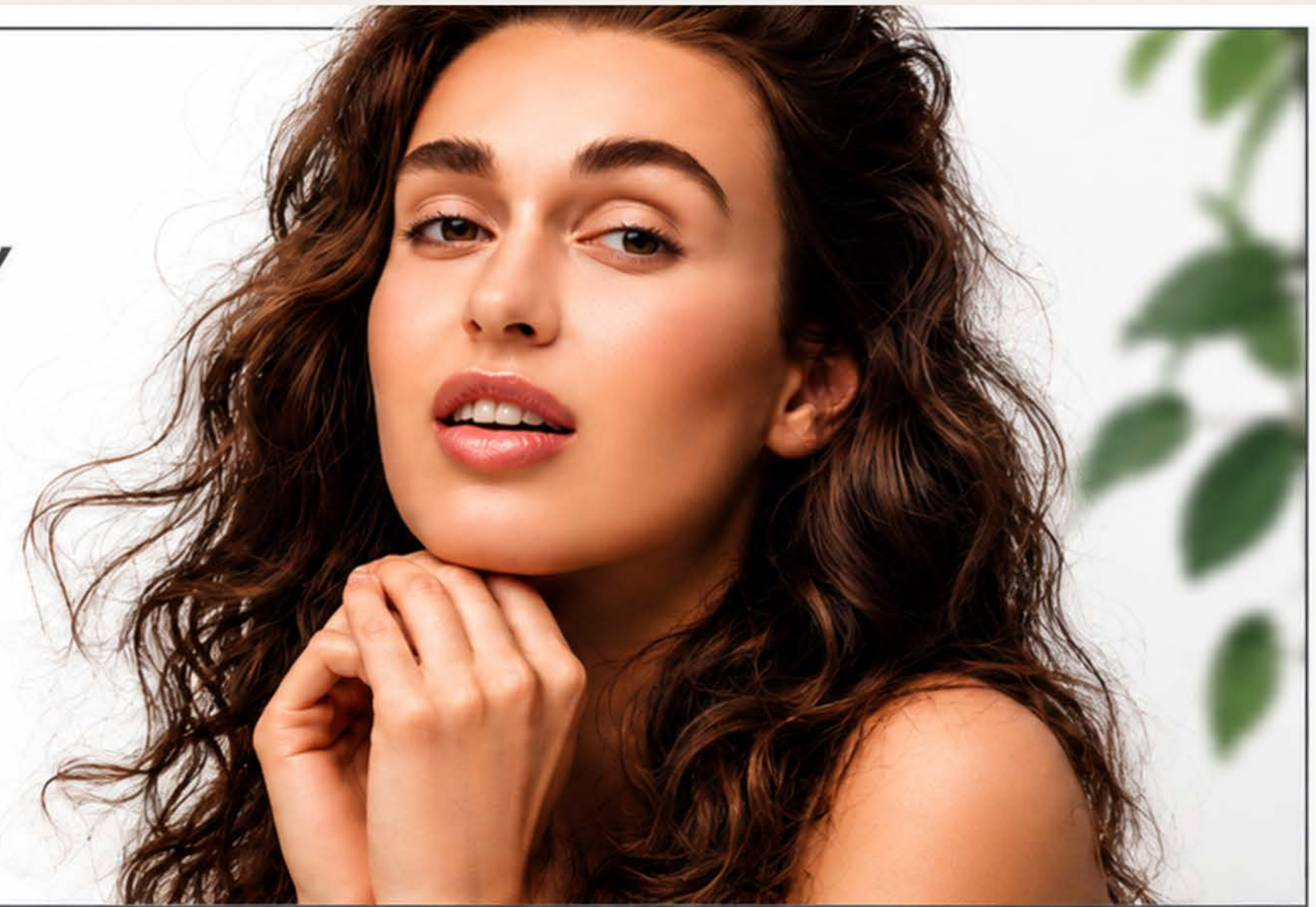
A Golden State Dermatology Affiliate

421 N RODEO DRIVE, STE. T-7
BEVERLY HILLS



310.274.5372

www.rodeoderm.com



Redefining Beauty with Precision.

- Cosmetic Dermatology
- Cosmetic & Facial Plastic Surgery
- Skin Cancer Treatments
- Medical Dermatology



Additional Locations: Encino, Torrance

Edgar Fincher, MD, PhD
Lisa Chipps, MD
Lauren Moy, MD
William Kwan, MD
Jeffrey So, PA-C
Shelby Saltsman, PA-C

*Congratulations
on the Beverly Hills Chamber's continued support
of the business community.*

The Law Offices of Murray D. Fischer

54 years of service , representing both residences and businesses in the City of Beverly Hills.

Specializing in

Real Estate | Construction Law | Entitlement Law | Historic Analysis



TWO INGREDIENTS. NOTHING ELSE.

NEFT

VODKA

NOW AVAILABLE AT
RALPHS AND TOTAL WINE
& MORE

Imported by NEFT USA, Miami, FL 40% alc./vol. Sip responsibly. Distilled from rye. ©2025 NEFT Vodka USA, Inc. All rights reserved.

YOUR NEW FAVORITE **AÇAÍ BOWLS & FUNCTIONAL SMOOTHIES** SPOT IS NOW IN BEVERLY HILLS!



SCAN THE QR CODE AND GET 15% OFF YOUR FIRST ORDER THROUGH THE PALMETTO SUPERFOODS

Palmetto
Superfoods

WWW.PALMETTOSUPERFOODS.COM

9643 S SANTA MONICA BLVD
BEVERLY HILLS, CA 90210



**RABBIT
FOODS**

BEVERLY HILLS'

FAVORITE SMOOTHIE POP!

MADE WITH WITH ORGANIC FRUITS & VEGGIES

PERFECT FOR:



BIRTHDAY
PARTIES



CORPORATE
EVENTS



HOTELS &
GRAB-AND-GO



SCHOOL
FUNDRAISERS



AVAILABLE WEEKLY AT THE
BEVERLY HILLS FARMERS MARKET

Ice cream taste. Smoothie nutrition.



LOCAL DELIVERY
AVAILABLE

BOOK RABBIT FOODS
FOR YOUR NEXT EVENT

✉ Jacqueline@rabbitfoods.com



*Let's make
your event
delicious!*

SUMMER
DESERVES
GOOD TASTE.

AND REAL
GINGER.



SANCTUARY

358 N. BEVERLY DR.
BEVERLY HILLS, 90210

WWW.SANCTUARYCLOTHING.COM







Western Alliance
Bank®

Nimble thinking.
Expert business banking.

/ Solve today. Succeed tomorrow.™

Proud Supporter of the Beverly Hills Chamber of Commerce

Western Alliance Bank,
Member FDIC.  





Your commitment to lead is inspiring and motivating

We proudly celebrate this year's Summer Garden Party and applaud our own **Stephanie Cohen** as she assumes the role of board chair, guiding the future with confidence, insight and distinction.



Pretty Organic Girl
The Best Organic Website

AMBA

BEVERLY HILLS
estiatorio

THE SPA
AT THE
MAYBOURNE

SPA MEMBERSHIP

Become a spa member at the largest luxury spa in LA county, and enjoy access to the spa, fitness facility and rooftop pool. A space to call your own.
A sanctuary to savor, time and time again.

225 North Canon Drive, Beverly Hills, CA 90210 • spa@maybournebeverlyhills.com • +1 (310) 860 7840



Prêt-à-Portea
THE RED CARPET COLLECTION

A favorite among fashionistas with a sweet tooth, Prêt-à-Portea has redefined what an afternoon tea can be with playful couture sweets that turn celebrity fashion moments into edible art.



Scan Here to Reserve
Friday through Sunday in The Terrace Tea Room

THE
MAYBOURNE
BEVERLY HILLS

Adventure Chic Cruises & Travel

Luxury Travel
for the Adventurous Spirit



 SILVERSEA®



DO A DEEP DIVE

The Islands of The Bahamas are tops for diving. Ready for your closeup with green turtles, circling reef sharks and stingrays?

Find the best sites at Bahamas.com/dive



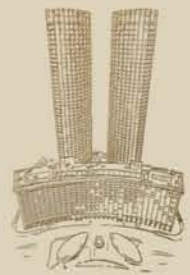
PARK ELM

RESIDENCES AT CENTURY PLAZA

A Bespoke Collection of Move-In-Ready Residences

Park Elm Residences are the private center of Los Angeles' most complete address, a rare vantage where the horizon belongs to you. Rising above Century Plaza, it reimagines the estate for a vertical city.

Here, privacy is absolute, connection seamless, and life moves entirely at your command.



2-4 Bedroom Residences | Starting from 2.6 Million to over 20 Million
Visit Our Newly Completed Model Residences, Fully Furnished by RH | Now Available for Viewing
Move-In-Ready Residences

Learn more at ParkElmCenturyPlaza.com | (310) 807-2241



The information provided herein is for informational marketing purposes only and should not be regarded as an offer or solicitation. The information provides no warranty of any kind including, but not limited to square footage, future home values, market conditions, views, stglines and availability of amenities. Illustrations are conceptual and may not reflect the final product, color scheme or outcome following construction. All designs are subject to change, modification or unforeseen delay. Plans are preliminary and may be modified to comply with engineering requirements, permits or other market conditions. Amenities may require special access or membership. All offerings are subject to compliance with CC&Rs that may be recorded on title, any other matter that may be on title, zoning restrictions or other laws, association bylaws or other rules and regulations that may be promulgated by the governing homeowners association. This marketing is intended to provide equal housing opportunities, and does not discriminate based upon any protected class of individuals. © 2025 Sotheby's International Realty. All Rights Reserved. Sotheby's International Realty® is a registered trademark and used with permission. Each Sotheby's International Realty office is independently owned and operated, except those operated by Sotheby's International Realty, Inc. The Sotheby's International Realty network fully supports the principles of the Fair Housing Act and the Equal Opportunity Act. Neyshia Go DRE# 01933923

LOGO SPONSORS



PARK ELM
AT CENTURY PLAZA





Professional Service, Unwavering Integrity.
— An Escrow Team You Can Trust —



Gracie Jaramillo

*Branch Manager /
Senior Escrow Officer*

-  (310) 341-3442 Office
-  (310) 940-2920 Direct
-  gracie@cornerescrow.com



Christopher Hack

Account Executive

-  (310) 341-3442 Office
-  (310) 425-5402 Direct
-  christopher.hack@cornerescrow.com

 9301 Wilshire Blvd, Suite 614, Beverly Hills, CA 90210

 www.cornerescrow.com

Nothing Less Than Excellence



Ready to Roll

Luxury Transportation Services
(310) • 314 • 4353 / readytoroll.com



GLAR IS...

more than just tools, knowledge and continued education.

WHO WE ARE

We are a community partner in **Beverly Hills** committed to working together to make positive changes that enhance where we live & work.



Beverly Hills May 2026 Market Snapshot



299

ACTIVE LISTINGS



\$4.93 M

MEDIAN PRICE



31

MEDIAN DOM

*Data courtesy of VestaPlus powered by the MLS. All data cited is for single-family homes.

GREATER LOS ANGELES REALTORS®

MAY 2026 STATS

Barrelpick

.COM

PICK YOUR OWN BOURBON BARREL

Legendary Private Releases Selected & Designed By You.

HOW IT WORKS



PICK YOUR BARREL

In-person or receive an at home sample kit.



SELECT YOUR GLASS & CLOSURE

Find the perfect canvas for your vision.



DESIGN YOUR LABEL

Bring your story to life by getting creative.



SHARE YOUR BOTTLE

Pickup bottles at distillery or ship to your home.



FOR MORE INFO VISIT
BARRELPICK.COM



indy
BY  **INDUSTRIOUS**




INDUSTRIOUS

 **INDUSTRIOUS**



SUMMER IS SERVED

ELEVATE EVERY MOMENT

Clean, vapor distilled hydration for the moments worth gathering around.

ENJOY
15% OFF
YOUR ORDER
USE CODE:
PRTODAY



VAPOR DISTILLED & MINERAL ENHANCED



PLASTIC-FREE GLASS BOTTLE



AFFIRMATION CAP FOR MINDFUL HYDRATION

 @viuearthwater

 www.viuearthwater.com

 @viuearthwater

 Viuearth Water

★★★★★ "Pure taste with no plastic aftertaste. The glass bottle makes all the difference." — Alero J.



BOOK YOUR TABLE NOW!



Fanny's Café and Restaurant

LOCATED INSIDE THE
ACADEMY MUSEUM OF MOTION PICTURES

Lunch + Dinner

MONDAY: 10am-7:15pm

CLOSED TUESDAY

WEDNESDAY-SUNDAY: 10am-7:15pm

Happy Hour

MONDAY: 3pm-5pm

WEDNESDAY-SUNDAY: 3pm-5pm



aftercare



After care home health services include...

- Registered Nurses & Licensed Vocational Nurses -licensed to provide close monitoring of patients and specific procedures ordered by the physician.
- Certified Nurses' Aides -Providing care, but not requiring complex procedures.
- Caregivers -Providing personal care, such as bathing, dressing, meal preparation, housework, and lifting. Live in or out Caregivers are available.

280 S. Beverly Drive Ste 410 Beverly Hills, CA 90212 | 310.271.5073 | ditasaftercare@aol.com

SVJ



SOMETHING VINTAGE JEWELRY

SVJ is proud to support the Summer Garden Party, celebrating craftsmanship, legacy, and timeless style while honoring meaningful connections, new opportunities, and the inspiring spirit of a Beverly Hills summer evening among the city's distinguished business community leaders.



BEVERLY HILLS CHAMBER OF COMMERCE
SUMMER GARDEN PARTY



Experienced local senior care for your peace of mind.



Compassionate care. Trusted caregivers.
Better living at home.



Learn more or request care today!





IS A PROUD SPONSOR OF THE

BEVERLY HILLS CHAMBER OF COMMERCE 2026 SUMMER GARDEN PARTY

CONGRATULATIONS TO THE 2026 BOARD OF DIRECTORS



Trusted by communities. Powered by people. Driven by service.

- Recycling Services
- Organics Diversion
- Solid Waste Collection
- Street Sweeping
- Community Investment
- C&D Recycling



AthensServices.com

(888) 336-6100



Experience the Beverly Hills Health Center Difference

A New Standard of Integrated Concierge Healthcare



Beverly Hills Health Center brings together a collective of premier healthcare organizations dedicated to delivering elevated, patient-centered medical care, advanced diagnostics, wellness services, and personalized treatment solutions — all within one integrated destination in the heart of Beverly Hills.

OUR NETWORK OF SPECIALIZED HEALTHCARE ORGANIZATIONS INCLUDES:



Personalized concierge medicine, preventive care, executive wellness, longevity-focused healthcare, and 24/7 physician access



Comprehensive cancer screening, infusion therapies, supportive oncology services, and individualized treatment coordination



State-of-the-art imaging technology including MRI, CT, ultrasound, mammography, PET/CT, and advanced diagnostic services

Together, our organizations provide seamless access to comprehensive healthcare services designed around convenience, efficiency, discretion, and exceptional patient experience. Patients benefit from coordinated care, same-day appointments, advanced imaging, wellness therapies, preventive screenings, IV therapies, and personalized health management — all supported by an experienced multidisciplinary team.

Whether you are seeking proactive wellness support, advanced diagnostic imaging, concierge medical care, specialty treatment coordination, or executive health services for yourself and your family, Beverly Hills Health Center offers a connected healthcare experience tailored entirely around your needs.

Schedule Your Private Consultation Today >

Beverly Hills Health Center
8900 Wilshire Boulevard, Beverly Hills, CA 90211, USA

BHHealthCenter.com
BHConciergeHealth.com

BHCancerCenter.com
OptimaDI.com



CHAMBER
of
COMMERCE



THANK YOU TO OUR SPONSORS!

SUPPORTING SPONSORS

Grant's Crusade Foundation

Saks Fifth Avenue

Southern California Edison Company

TABLE SPONSORS

Adventure Chic Cruises and Silver Sea
Athens Services
LA County METRO
Industrious
Park Elm Residences at Century Plaza

Moy, Fincher, Chipps Facial Plastics & Dermatology,
A Golden State Dermatology Affiliate
Ready to Roll Los Angeles
Network Experts
Corner Escrow

#BEVERLYHILLSGARDENPARTY | #BHCC | #BEVERLYHILLS

CHAMBER AMBASSADORS

DeAnne Yamada
Graciella Viviana Boltiansky, Nonna's Empanadas
Pam Dodgen, Grant's Crusade
Cheryl J. Kagan, Optimum Seismic, Inc.
Abi Koya, Clef Foundation
Aaron Orpelli, Beverly Hills Wellness Center
Beatrice Hernandez, Wilshire Financial
Harrison Silverstein, Coastline Capital
Lashelle Ullie, The Lashelle Effect Atelier
Christopher Westlund, Waldorf Astoria Beverly Hills
Karl Brook, KRB Construction
Dayna Roberts, Green Compass Global
Joleigh Sherwood, Creating Connections, A Nanny Referral Service
Perry Aston, CrowdBoost Marketing
Narbeh Leon, EverBank

SPECIAL THANKS TO THE FOLLOWING

City of Beverly Hills Special Events Department
City of Beverly Hills Public Works Department
WGS Group Security
Method Event Productions
Town & Country
CrowdBoost Marketing

CHAMBER STAFF

Todd Johnson, President & Chief Executive Officer
Farimah Fayyad, Chief Financial Officer & Office Manager
Julian Pineda, Director of Marketing & Events
Melissa Case, Director of Sales
Christian Lipton, Events Manager
Blair Schlecter, SVP Economic Development & Government Affairs
Matthew Kalinowski, Senior Graphic Designer



CHAMBER
of
COMMERCE